

# FAREGO SERVICE APP

## SERVICE MADE SIMPLE



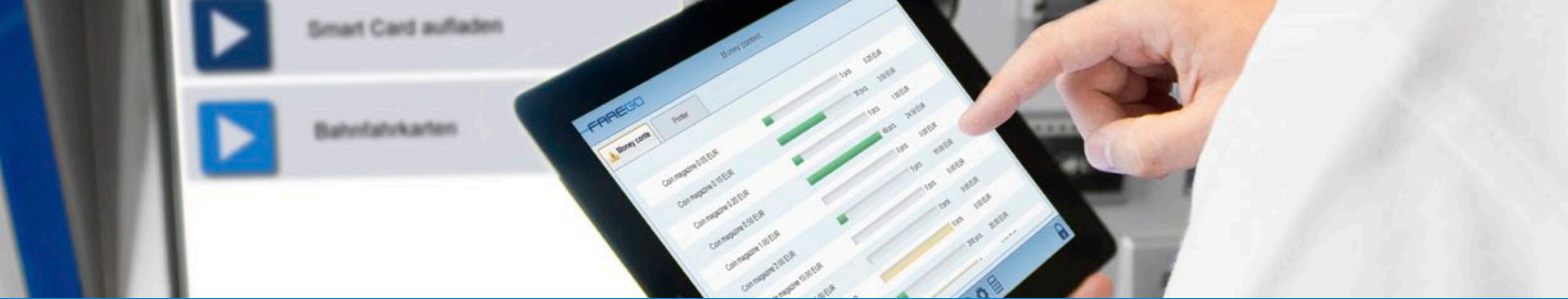
### Your advantages

- Time saving
- Cost advantages
- Increased staff availability
- Current device overview
- Intuitive operation

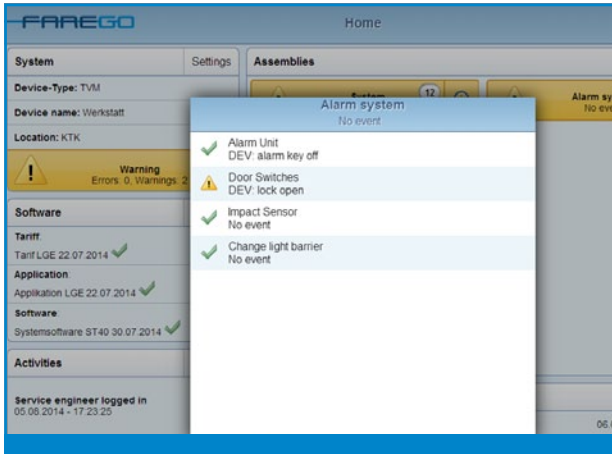
The Service App is the perfect way to support all service works for your fare collection management system.

Through web based technology, the new Service App offers a complete overview of the current condition of your equipment and their individual components. The user friendly interface makes it possible to perform service works locally and remotely. For example you can check the amount in a cash box without opening the ticket vending machine. The Service App's new features provide an efficient operation and significant time and cost savings.

This innovative concept has been developed in close cooperation with ergonomic experts third party so that it is specially designed for intuitive operation.



## SERVICE APP

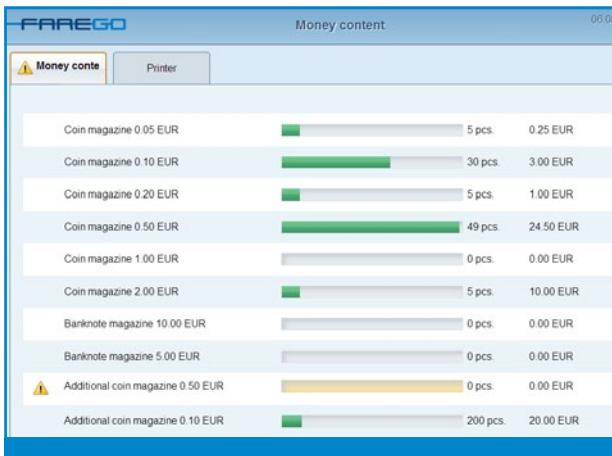


### Intuitive design and touch concept

The Service App gives a general overview of all device-related data. The main screen can be accessed through a web browser on a mobile or desktop to check device status and error descriptions. This cuts out the time-consuming act of opening the machine. All components are designed for an optimal touch operation and are based on standard mobile gestures.

### User rights management

Specific viewings and usage rights can be assigned to different groups according to their job responsibility (e. g. cash sales, service technician or administrator).



### Remote access

Authorised users can use the app on any device with a web browser (like a tablet) from any location. The app is compatible with iOS, Android, Linux and Windows systems and does not require any additional software.

### Live tracking

Real time information like current processes, occurring events or performed service commands can be tracked anywhere.

### Customer specification

Additional bespoke functions can be added to the standard Service App to meet individual customer requirements.

### Multi user usage

The Service App can be used by multiple users on different devices at the same time.

### Architecture

It is possible to use the Service App via remote access on less powerful devices due to the high architecture standard.